

Summer OUTDOOR PACKAGE

Hotels / Apartments / B&B
June - September 2021



Monday:

MY FIRST VIA FERRATA with Mountain Guides (from June 6th to September 27th)

The Mountain Guides will lead you and teach you the right approach to the via ferrata, starting from the easiest and most panoramic routes of the valley, such as the Roda de Vael, in the group of Catinaccio, or the Bepi Zach, at San Pellegrino Pass.

Meeting Point: 8.00 a.m. Sport Check Point Pozza or Moena.

Expected return: about 4.00 p.m. Altitude gain: about 700m. Altitude loss: about 700m.

Price: 95€ per person.

Summer Outdoor Price: 65€ per person. (Min. 3 participants)

Notes: Price includes via ferrata kit hire and Guide for the whole day. Lift ticket included in the PanoramaPass or to be paid extra. Excursion with a limited number of participants (max 5 persons per guide).

Difficulty level: INTERMEDIATE - MIN. AGE 10 YEARS. **ACTION - FAMILY**



HIKING TOWARDS PORDOI with Territorial Guides (from June 14th to August 30th)

Panoramic excursion where we will both walk and use the lifts to support alternative mobility. The guide will accompany us on the beautiful paths of Belvedere area and tell us about the wonder that surrounds us. We will reach the famous Terrace of the Dolomites where we can stop and enjoy our packed lunch with a view that will leave us breathless!

Meeting point: 9.00 am departure Pian Frataces gondola at Lupo Bianco. Until first week of July meeting point 9.00 am Pordoi Pass. Expected return: about 3.30 pm. Altitude gain 300m. Altitude loss 400m. Maximum altitude: 2950 m.

Standard price: € 30 adults, € 15 children (8-12 years). (min. 6 people)

Summer Outdoor Price: € 18 adults and 9€ children up to 12 years.

Notes: Bring packed lunch. Lift ticket and eventual buses to be paid extra.

Difficulty level: MEDIUM / EASY - MIN. AGE 8 YEARS. **EXCURSIONS**



MTB TEST DAY FOR CHILDREN AND YOUNGSTERS with MTB Instructors

Val di Fassa Guest Card activity (From June to September)

Test day at the Skillpark in Canazei. Have fun with our instructors experiencing jumps, boardwalks and parabolics! Children and youngsters can decide to take part to the weekly MTB courses.

Meeting point: 9.30 am by the Canazei Marmolada Ski School

Meeting point: 9.30 am by the playground in Soraga.

Return: about 12.00 pm

Price: 22€, FREE for Val di Fassa Guest Card owners. (min 4 children)

Summer Outdoor and Bike Hotel Price: FREE

Note: Children must be able to ride a bike without training wheels. Children who want to learn riding without training wheels can take specific private lessons.

Difficulty Level: EASY - MIN. AGE 6 YEARS. **BIKE - FAMILY**



MTB TEST TOUR ADULTS with MTB Instructors Val di Fassa Guest Card activity

(From June to September)

Easy/intermediate MTB excursion along forest roads and single tracks with MTB instructors, who will evaluate your skills and suggest you the most appropriated excursion to do during the week. Elevation gain: about 400m to pedal.

Meeting point: 9.30 am by the Canazei Marmolada Ski School

Meeting point: 9.30 am by the playground in Soraga.

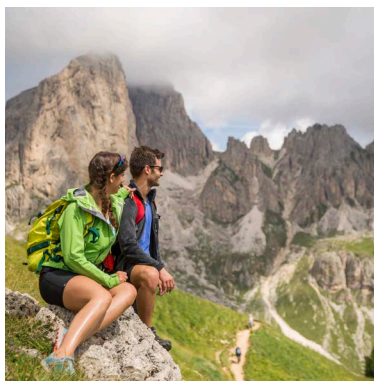
Return: about 12.00 pm

Price: 22€, FREE for Val di Fassa Guest Card owners. (min 4 people)

Summer Outdoor and Bike Hotel Price: FREE

Note: Please come to the meeting point with your own or rented bike (hire service available on request). Helmet compulsory.

Difficulty Level: EASY/INTERMEDIATE - ADULTS. **BIKE**

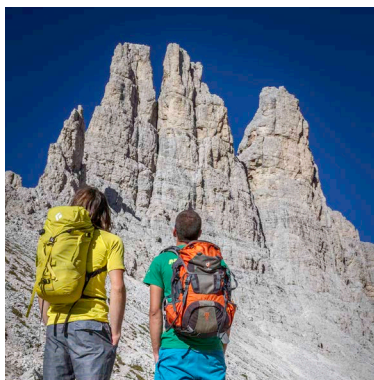


Tuesday:

CROSSING THE CATINACCIO with Territorial Guides (from June 8th to September 21st)
Spectacular and easy walk at high altitude in the Catinaccio Group, from Roda di Vael to Ciampedie. Overcoming the major altitude drop with the lifts we will go through the ancient and suggestive "Trail of the sheep" once crossed by the shepherds in grazing cattle.
Meeting point: 8:45 am Vajolet chair lift in Pera di Fassa, departure by private bus at 9:00 am. Arrival at 9:20 am to start the crossing. Expected return to Pera di Fassa: around 4:00 pm. Altitude gain about 400 m. Altitude loss about 500 m. Maximum altitude: 2.300 m.
Price: 30€ adults, 15€ children (10 - 12 years old) (Min. 6 participants).
Summer Outdoor Price: 18€ adults, and 9€ children up to 12 years.
Notes: Bring a packed lunch. Lifts to be paid extra. Private bus to be paid extra 5€.
Difficulty level: MEDIUM - MIN. AGE 10 YEARS. **EXCURSIONS**



PANORAMIC MTB TOUR with the MTB Instructors (from May to November)
Half-day excursion to discover gravel roads and scenic forest trails. We will learn to make the best use of the comfortable e-bike engine thanks to the support of the mtb instructors who will also give us some important advices on the descent technique.
Meeting point: 9.00 am Sport Check Point Pozza or Campitello. Return: about 1.00 pm.
Price: 27€ per person. (Min 5 people).
Summer Outdoor & Bike Hotel price: 10€.
Notes: Electric MTB rental not included in the price.
Difficulty level: MEDIUM / EASY - MIN. AGE 12 YEARS. **BIKE**



CLIMBING APPROACH FOR ADULTS
POZZA or CANAZEI every other week (Val di Fassa Guest Card Activity)
The Mountain Guides also offer the possibility to adults to try a climbing experience moving their first steps on the rock. The activity will be enriched by abseiling and an easy equipped path. Everyone will have the chance to try this fantastic activity in total safety.
Meeting point every other week:
Canazei: 9.15 am at the valley station of Belvedere cable car. Return: about 3.40 pm.
Meeting point: at 9.00 am Piazza San Nicolò, in front of the Pozza ski school.
Return: about 3.40 pm.
Special price: 20€ per person, reserved to Val di Fassa Guest Card owners.
Note: Notes: We recommend comfortable clothing and trekking shoes recommended. Climbing gear will be provided by the Guides. Bring a packed lunch.
Difficulty level: EASY - from 15 YEARS.



CLIMBING APPROACH FOR CHILDREN
POZZA & CANAZEI (Val di Fassa Guest Card Activity)
Easy excursion to reach the crags (natural climbing walls). During the activity kids will learn to climb with the assistance of the Mountain Guides while having great fun.
Meeting point: at 9.00 am at the valley station of the Belvedere lift.
Meeting point: at 9.00 am Piazza San Nicolò, in front of the Pozza ski school.
Return: about 4.00 pm.
Price: FREE and reserved to Val di Fassa Guest Card owners.
Notes: We recommend comfortable clothing and trekking boots or sneakers with a sculpted sole. Bring a snack and a bottle of water. Lifts are included in the Panorama Pass or to be paid extra. In case of bad weather, the activity will take place at the Campitello climbing hall (admission fee € 5). Difficulty level: EASY - from 7 to 14 YEARS.

Wednesday:

EXCURSION WITH PICNIC IN A REAL MOUNTAIN LODGE... AMONG WOODS, SPRINGS AND WATERFALLS! with Territorial Guides (From June 16th to September 8th)
Easy and regenerating excursion in the peace of Val San Nicolò. Walking through alternative hidden paths we will visit the sources of the waterfalls listening to their roar. In a unique paradise of beauty and quiet we will visit the typical mountain huts used for the mountain pasture. We will let ourselves be pampered by a tantalizing "aperitif" and toast with Trento DOC in a mountain lodge. Here we can relax and enjoy our picnic outdoors on the lawn or in the warmth of the cabin before returning to the valley.
Meeting point: 8.30 am Sport Check Point Pozza di Fassa. Return: about 4:00 pm.
Altitude gain and loss: about 300 m. Length about 6 km.
Price: 45€ adults , 25€ children (8-12 years).
Summer Outdoor Hotels and Apartments Guests: 30€ adults, 15€ children (8-12 years).
(Price includes accompaniment with territorial guide, aperitif in a real mountain lodge and toast with Trento DOC).
Notes: Pozza-Val San Nicolò shuttle train to be paid extra (Return ticket 14€). Bring a packed lunch. Difficulty level: MEDIUM / EASY - MIN. AGE 8 YEARS. **EXCURSIONS**





JIR A MONT with Territorial Guides (From June 23th to September 8th)

Let's go to the mountains! An excursion at altitude with the use of the lifts to fully enjoy the beauty of our mountains. We will alternate two excursions: one in the heart of Catinaccio group at the feet of the Vajolet towers, and another one at Passo San Pellegrino. We will cross Passo delle Selle to walk down the beautiful Val Monzoni.

Meeting point: 9.00 a.m. depending on the excursion.

Expected return: about 4.30 p.m. Altitude gain: about 400 m.

Price: 30€ adults, 15€ children (10 - 12 years old) (Min. 6 participants).

Summer Outdoor Price: 18€ adults, and 9€ children up to 12 years.

Notes: Bring a packed lunch or possibility to have lunch at the refuge. Lifts to be paid extra.

Difficulty level: MEDIUM - MIN. AGE 10 YEARS. **EXCURSIONS**



SASSOLUNGO MTB TOUR anticlockwise with the MTB instructors

(From June 9th to October 6th)

On mountain bike around the magnificent Sassolungo massif. We will first reach Col Rodella by cable car, from there we will ride through the "City of rocks", we will reach Monte Pana and then climb the Duron pass to descend through the homonymous valley.

Length: about 36 km. Altitude gain: about 700 m, Altitude loss: about 1300m.

Meeting point: 8.30 am Sport Check Point Canazei or Campitello. Return: about 3.00 pm.

Price: 45€ per person. (min 5 people).

Summer Outdoor & Bike Hotels price: 20€ per person.

Notes: Bring your own or rented mtb, helmet is mandatory. Lifts to be paid extra.

Difficulty level: MEDIUM - AGE MIN. 12 YEARS. **BIKE**

Thursday:



WITH HEADLAMPS IN THE TRENCHES OF PADON with Mountain Guides

(From June 17th to September 16th)

Full day excursion to explore the tunnels of the Padon area with the headlamps, we will walk among the trenches of World War I with a breathtaking view of Marmolada glacier. In the afternoon, after enjoying a good lunch on the panoramic terrace of the Padon refuge, we will visit the artillery positions on the Howitzers' path.

Meeting point: 9.15 am departure of Padon chairlift at Capanna Bill.

Expected return: about 4.00 pm. Altitude gap: ↑ ↓ 300m.

Price: 40€ adults, 20€ children (8 - 12 years old).

Summer Outdoor Price: 20€ adults, 10€ children (8-12 years). (Min. 7 people).

Notes: Lifts to be paid extra. Bring a packed lunch or possibility to have lunch at the refuge.

Difficulty Level: EASY/INTERMEDIATE. MIN. AGE 8 YEARS. **EXCURSIONS - FAMILY**



E-BIKE AGRI-TOUR with the MTB instructors (from May to November)

Lovely e-bike excursion on cycle route and forest roads to discover the flavors and traditions of the valley. During the day we will stop in the most famous farmhouses where we will taste their typical products, make friends with animals and savor the traditions of the past.

Meeting point: 9.00 am Sport Check Point Canazei. Return: about 3.30 pm

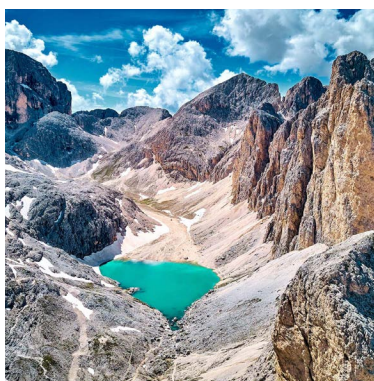
Standard price: 45€ adults, 35€ children from 4 to 12 years

Summer Outdoor & Bike Hotel price: 25€ (min. 6 people).

Notes: The price includes MTB FCI Instructor, visit at the farmhouse and tastings/lunch.

Remember to show up at your appointment with your own or rented e- bike. Helmet is mandatory. It is possible to participate also with a child carrier trailer.

Difficulty Level: EASY - MIN. AGE 4 YEARS. **BIKE - FAMILY**



LAKE ANTERMOIA with Mountain Guides (From June 17th to September 16th)

Excursion to discover the famous heart-shaped lake nestled in Catinaccio d'Antermoia mountains. It is a quite demanding excursion, but we will make it a little easier by reaching val Duron by off-road taxi. After visiting this enchanted place, we will descend through an alternative path that takes us to val di Dona and back to val Duron or directly to Campitello. Meeting Point: 7.00 a.m. Departure taxi val Duron. Parking available at Col Rodella cablecar station (5 minutes walk from the meeting point). Expected return: about 4.00 p.m.

Altitude gain: about 700m. Altitude loss: about 1000m.

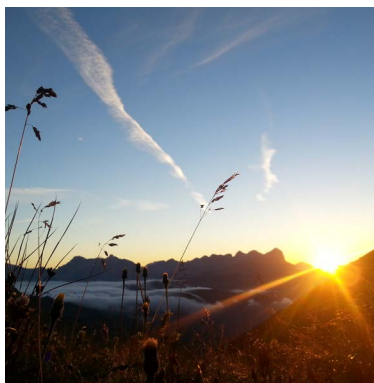
Standard price: € 40 per person.

Summer Outdoor price: 20€ (Min 7 people).

Notes: Bring a backpack with wind/rain jacket, a bottle of water and packed lunch.

Possibility to have lunch at the refuge. Taxi service to be paid extra (8€ per way per person).

Difficulty level: DIFFICULT - MIN. AGE 12 YEARS. **EXCURSIONS**



Friday:

HIGH ALTITUDE SUNRISE EXCURSION WITH BREAKFAST with Territorial Guides

(from July 2nd to September 3rd)

A unique opportunity to experience the sunrise on the Marmolada and Dolomites peaks from above. Walking during the first morning lights we will reach the panoramic Belvedere area to enjoy the quiet of the mountains and, if we are lucky, we will be able to spot the animals that live here. A rich breakfast will follow at the mountain hut with breathtaking views. We will then walk back towards the Pordoi Pass satisfied with our rejuvenating morning experience.

Meeting point: 4.30 - 5.00 - 5.30 am (the meeting time varies according to the period) at the parking of Sass Pordoi cable car.

Expected return: about 9.00 am Altitude gain and loss: about 200m

Price: 38€ adults, 28€ children (8-12 years old).

Summer Outdoor Price: 28€ adults and 23€ children (8-12 years). Including a hearty breakfast at the Refuge which will make the experience even more special.

Difficulty level: INTERMEDIATE/EASY - MIN. AGE 8 YEARS. **EXCURSIONS - VITALITY**



PANORAMA TREK with Territorial Guides (from June 18th to September 24th)

Panoramic excursion at high altitude that will take us, through the most beautiful hidden paths, from the top of Col Rodella down to the valley. We will stop for lunch in the beautiful spot called Soracrepia, where we can admire the noisy waterfalls.

Altitude gain: 100 m. Altitude loss: about 1000 m

Meeting point: 8.45 am at the ticket office of Col Rodella cable-car station.

Return: about 3.30 pm.

Price: 30€ per person. Summer Outdoor Price: 18€. (Min 6 people).

Notes: Notes: Bring lunch packet. Lift ticket to be paid extra (one way ticket).

Difficulty level: INTERMEDIATE/DIFFICULT - MIN. AGE 12 YEARS. **EXCURSIONS**



THE CITY OF MARMOTS with the Territorial Guides (From June 26th to September 10th).

Easy excursion at San Pellegrino Pass to observe these funny high mountain inhabitants. If you pay attention you will hear their whistles.

Meeting point: 2.30 pm Costabella chairlift station at San Pellegrino Pass.

Duration: about 3h.

Price: 20€ adults, 10€ children (4-12 years).

Summer Outdoor price: 10€ adults, 5€ children.

Note: trekking strollers allowed. Lifts to be paid extra.

Difficulty level: EASY - EVERYBODY.

EXCURSIONS - FAMILY

Saturday:

DOLOMYTHICAL ADVENTURE! with the Mountain Guides

(from May to November)

Touch the water of the waterfalls between easy rock climbing passages, equipped sections and adrenaline abseiling. For an unforgettable day accompanied by our Mountain Guides in the heart of the Dolomite rock.

Altitude gain and loss: about 250 m.

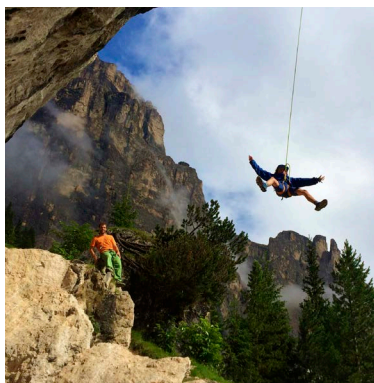
Meeting point: 9.00 a.m. parking place at Pian de Schiavaneis. Return: about 3.00 p.m.

Standard price: 95€ per person. Summer Outdoor price: 65€ (min. 3 people).

Notes: The price includes equipment rental (via ferrata kit, helmet, harness).

Bring a packed lunch.

Difficulty level: MEDIUM - CHILDREN HEIGHT MIN. 1.40m. **ACTION - FAMILY**



SELLARONDA MTB TOUR clockwise or counter-clockwise

with MTB instructors. (from June 12th to September 26th)

World famous panoramic tour around the majestic Sella Group, right in the hearth of the Dolomites, UNESCO World Heritage. We will ascend by means of lifts and ride across Gardena, Campolongo, Pordoi and Sella Pass. Exciting single tracks, breathtaking descents and unique mountain landscapes will wait for you!

Elevation gap clockwise: gain 450 m, loss 3.730 m. Length: 58 km.

Elevation gap counter-clockwise: gain 900 m, loss 3.540 m. Length: 56 km.

Meeting point: at 8:30 am Sport Check Point Canazei. Return: about 4:30 pm.

Price: 45€ per person (Min. 5 people).

Summer Outdoor Price: 25€. 10% discount for Bike Hotels' guests.

Remember to show up at your appointment with your own or rented full-mountain bike, gloves and helmet. Lift ticket not included in the price. Bikepass prices: 1 day: 47€; 3 days out of 4: 110€; 5 days out of 7: 147€.

Difficulty level: INTERMEDIATE / DIFFICULT - ADULTS. **BIKE**





Sunday:

LATEMAR LABYRINTH TRAIL with Territorial Guides (from May to November)

Through the green meadows of Costalunga Pass we will reach the so-called Latemar Labyrinth, a wide area of rocks that fell about 200 years ago from the Schenon wall. The gigantic landslide erased the third lake of Carezza (Lago di Sopra). The labyrinth is a path between rocks and tunnels that leads to the spectacular rainbow lake.

Price: 20€ adults, 10€ children (8 - 12 years).

Summer Outdoor price: 10€ adults, 5€ children (Min. 6 people).

Meeting point: 9.30 by Golf Hotel at Passo Costalunga (bus stop). Return: about 1.30 pm.

Altitude gain: 250 m.

Note: Bring a snack. The bus you might take is to be paid extra.

Difficulty Level: INTERMEDIATE/EASY - MIN. AGE 8 YEARS. **EXCURSIONS**



ON THE MOUNTAINS WITH MTB with the MTB instructors

(from June 20th to September 24th)

Learn or improve how to ride your mountain bike on downhill. We will get on the top of Col Rodella (one of the most panoramic points in the valley) by cable car. From here we will go down to the valley through beautiful gravel roads and trails.

Altitude loss: about 1000m.

Meeting point: at 9.00 am at the Sport Check Point Canazei. Return: about 1.00 pm.

Price: 27€ per person. Summer Outdoor Price: 15€ (min. 5 people)

Note: Bring your own or rented full suspension mtb, helmet and protections. Lift ticket not included in the price.

Difficulty level: INTERMEDIATE - MIN. AGE 12 YEARS. **BIKE**



SUNSET EXCURSION WITH DINNER AT THE MOUNTAIN HUT - Val Duron

with Territorial Guides (from June 13th to September 26th)

To live the mountain at night too...Evening excursion in the magic atmosphere of the Dolomites' sunset. You will enjoy a delicious traditional dinner in a Refuge and come back equipped with torches under a beautiful starry sky.

Meeting point: 4.30 pm Sport Check Point Campitello. Expected return: about 9.30 pm.

Altitude gain and loss: about 400m

Price: 55€ adults, 35€ children up to 12 years old (menù kid). (Min. 6 people)

Summer Outdoor Price: 35€ adults, 25€ children up to 12 years old (menù kid).

Notes: prices include guide, typical dinner at the Refuge and torches lights (drinks not included).

Difficulty level: INTERMEDIATE - MIN. AGE 8 YEARS. **EXCURSIONS - VITALITY**

All activities have to be booked within 6.00 pm of the previous day.

FREE cancellation within 48 hours from the start of the activity.

There may be variations in the program because of the weather conditions.

In case of bad weather the excursion can be postponed or canceled.

If canceled by the organization the cost will be totally refunded.

For all the excursions trekking boots or hiking shoes are required (no sneakers).

DISCOVER ALL THE OTHER ACTIVITIES WE OFFER ON THE WEBSITE

fassasport.com

All the activities will respect the health rules, we kindly ask you to always bring the facial mask with you (to access the lifts or for places where it is not possible to keep 1m the distance between us) and a hand sanitizer gel. Thank you for choosing our services! :)

INFO & BOOKING: everyday from 9.00 to 12.00 am and from 4.00 to 7.00 pm

by our Sport Check Point offices:

- Canazei: tel. +39 340 1147382

- Campitello: +39 0462 750490

- Pozza: +39 331 2989721

- Moena: +39 0462 573770

info@fassasport.com - www.fassasport.com

